

Email: cubeadmin@cubecinema.com
 Music enquiries: music@cubecinema.com
 Web: www.cubecinema.com
 Tel: (0117) 907 4190

ACCESS

The Cube welcomes everyone but the nature of the building makes access for some people difficult. If in doubt, call us and we will do our best to accommodate your needs.

ADVANCE TICKET SALES

Advance tickets for gigs and special events can be purchased from the following outlets:

THE BRISTOL TICKET SHOP: 0117 929 9008
THE HERE SHOP: 0117 942 2222

ONLINE ADVANCE TICKETS ARE NOW AVAILABLE FOR SELECTED FILMS

But even if these **sell out**, there may be some tickets held for sale on the door – please check.

Tickets for films on the door are from the in-house box office, from 30 minutes prior to the programme time.

FERAL TRADE COFFEE

The Cube serves **coffee** direct from rookie coffee farmer Alvaro Soberanes in Veracruz, Mexico, cultivated at 1500m under **leguminous** trees that pump nitrogen back into the soil – nothing more needs to be added. Roasted in order in Littlehampton UK, this coffee is as **single estate** as the Microplex itself: www.feraltrade.org

TICKET TOUT TUESDAY

Films marked TTT are only £3!

ENTRANCE ADDRESS

Dove Street South
 [off top-left of King Square]
 Lower Kingsdown
 Bristol
 BS2 8JD

POSTAL ADDRESS

4 Princess Row
 Bristol
 BS2 8NQ

MEMBERSHIP

The Cube is a **membership only** Cinema. Membership costs **£1** and you can purchase it on the door. Please remember to bring **your** membership card with you every time you visit. Each paid visit gets you a stamp, 6 stamps equals a free film!

SUPPORT

Those attending Cube events with a support worker or carer are offered one ticket without charge. We will try to extend this offer to cover all events on our programme but **advise emailing** ahead for confirmation.

ASYLUM

Film screenings are free to **asylum** seekers.

ORCHESTRA CUBE

We are an **improvisational** group based at the Cube. Musicians of all standards and backgrounds are **warmly** welcomed. orchestra.cubecinema.com

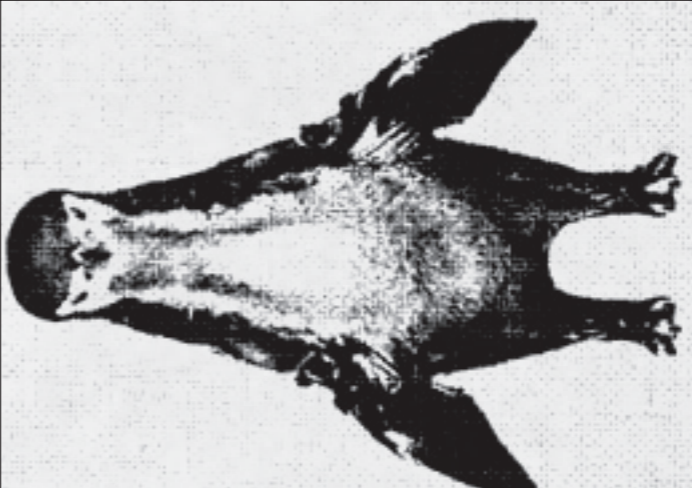
OBITUARIES

**FUCK OFF
 2016
 NOW YOU
 CAN DIE.**

The end is NYE - let's build a better '17
 Love Cube X

FUNNIES

PENGUIN



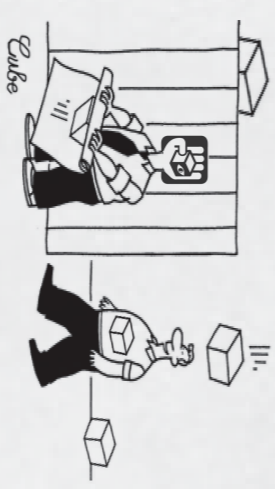
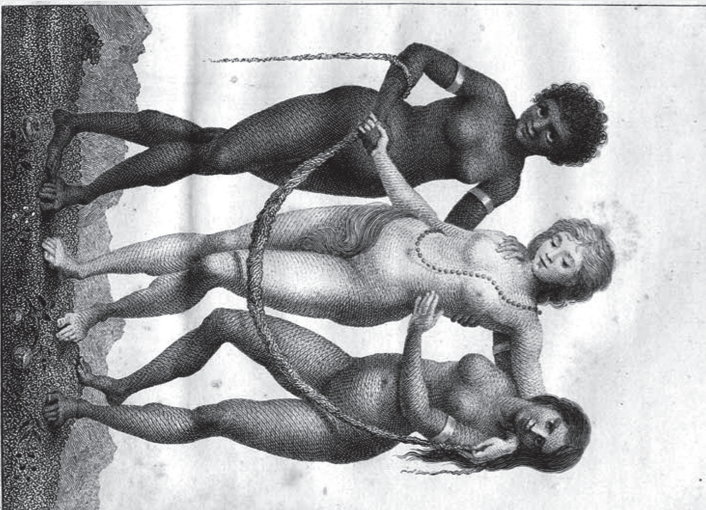
GIRAFFEE

ANSWERS

- JABBERS / 2. ADD / 3. TWADDLE / 4. RHYME OR REASON / 5. DRIVEL / 6. DEFY LOGIC / 7. ONENESS / 8. BABBLERS / 9. SHEET MUSIC / 10. IDIOTIC / 11. COMAS / 12. TELEPATHICALLY / 13. FREE TRADERS / 14. AMORALLY / 15. I'M LOST / 16. FULLFBAENEY / 17. NIMBUS / 18. OFFBEAT / 19. NEITHER (plus 4[+N]) / 20. UNSCENTED / 21. STUN / 22. EGO / 23. ANALGESIA

CRYPTIC CLUBS

- Makes **no** sense (7)
- "It just doesn't **up**" ("This makes **no sense**") (3)
- Model with a gait that makes **no** sense (7)
- Being without this makes **no** sense at all (5,2,6)
- It makes **no** sense to push **learner** (6)
- Make **no** sense (4,5)
- Unity **might** make **no** sense (6)
- They **make** **no** sense (8)
- Found in bed with Shake-**spears** food of love? This will make **no** sense to one of those who aren't musicians! (5,5)
- Model with a gait that makes **no** sense (7)
- There's **no** sense in being **this up** (7)
- No sense in it! No, none: her merry heart is broken (7,5,3,6)
- Dunce sent **out**, having **no** sense to (5)
- There's **no** sense in them (5)
- Going the **wrong** way, having **no** sense (4)
- Perhaps having **no** sense of self-importance (3)
- With **no** sense of right and wrong (8)
- Has a **lasagne** I **cook** giving **no** sense of suffering (9)
- "That made **no** sense to me" (2,4)
- Businessmen **have** **no** sense of The Cloud (6)
- Making **no** sense (10)



FRANK & ERNEST

The DEC '16 Cube MIRCOPLEX Programmation

Clear to the eye. A few days off... but peeps can check website for more details and new events. God knows about NYE btw

Fri	2	8pm	Hellfire Video Club presents: Robert Altman's IMAGES
Sat	3	8pm	BEEF & CUBE present: ACTION FILMS . Bea Hart, Jenny Barnes, Vicky Smith
Sun	4	11am	Cube Xmas Market (Free)
Sat	5	8pm	A Charlie Brown Christmas (Free Entry 1000)
Wed	6	8pm	Your Name (Kimi no Na wa) [cert: 12A]
Tue	7	11am	Bristol Radical History Group presents: Slaughter no Remedy
Fri	8	8pm	Nocturnal Animals (cert: 15)
Sat	9	8pm	Nocturnal Animals (TTTT*)
Sun	10	5:30pm	Nocturnal Animals (TTTT*)
Mon	11	8pm	TRASHMAS presents: Female Trouble
Tue	12	8pm	DADA for Girls presents: CARVED
Wed	13	8pm	Your Name (Kimi no Na wa) [cert: 12A]
Thu	14	8pm	Arrival
Fri	15	8pm	Arrival (cert: 12A)
Sat	16	8pm	Arrival (TTTT*)
Sun	17	11am	Arrival (TTTT*)
Mon	18	8pm	Baby Cinema: Arrival
Tue	19	8pm	Baby Cinema: Arrival
Wed	20	8pm	Paterson (cert: 1BA)
Thu	21	8pm	Paterson (TTTT*)
Fri	22	8pm	Paterson (TTTT*)
Sat	23	8pm	Meet Me in St. Louis [cert: 11A]
Sun	24	8pm	Meet Me in St. Louis
Mon	25	8pm	Meet Me in St. Louis [cert: 11A]
Tue	26	8pm	Meet Me in St. Louis [cert: 11A]
Wed	27	8pm	Meet Me in St. Louis [cert: 11A]
Thu	28	8pm	Meet Me in St. Louis [cert: 11A]
Fri	29	8pm	Meet Me in St. Louis [cert: 11A]
Sat	30	8pm	Meet Me in St. Louis [cert: 11A]
Sun	31	8pm	Meet Me in St. Louis [cert: 11A]

TTT = Ticket Tout Tuesday (€3 tk)
 F** = "Fuck" as in: "Fuck that's CHEAP!"
 TBC is to be confirmed. TBA is to be announced. Watch it.

The BEAS | of Bristol

Fun Headlines for front page

Gradually The Cube shaped up. L... are very healthy, and the... More wil... itself is if... Catapult fo... eclectic and genuinely e... W O R K E R S

Cunning and Bawling

had possibly... Donated comput... into a hub of Linux... The... and friendly... into the building... crossing... of the program. No... how... the grid... alternative... might have... always... the doors... in... hang out... have... Jan is a DJ's played... some... old films... new films... in... to no films. People gave... with... sh... reading... discussions. E... YOU ARE IN HERE FOR YOU; YOU ARE OUT THERE FOR... **DECEMBER 2016, ENGLAND**, but its actually there aren't any arts

SOULMATES

COPY FOR INSIDE Cube Programme. Lots of lover case and a few UPPER class....Last month of the year...Birth and Death Notices

Hellfire Video Club presents IMAGES

Friday 2nd December / 8pm / £5 / £4
ROBERT ALTMAN / 1972 / USA / 104 mins

Cert: **X**

STARing Susannah York as a children's writer holed up in the Irish countryside and slowly losing her grip on reality.

NIGHTmarish, creepy winter vibes predominate in our final HFVC screening of the year!

"Images", a lesser-spotted flick from unpredictable auteur Robert Altman, is a mesmerising 'going crazy in an isolated house' trippy, psychological mindbender from the golden days of New Hollywood.

BEEF and the Cube Present - Action Films: Bea Haut, Jenny Baines, Vicky Smith
Sat 3rd / 8pm / £5/4

An evening of **SINGLE** and **DOUBLE**-screen 16mm projections and live performances emphasizing bodily encounters, gestures and inscriptions. Acts of physical endurance are combined with explorations of space, place and the environment.

The three artists engage in different but overlapping

ways with the material and mechanical specificities of

celluloid film, incorporating humour and absurdity. Expect bodies, bicycles, feet and a participatory living film loop!



Bristol Radical History Group presents: 3 films and a Q&A/discussion

Slaughter No Remedy

A History Past, Present and Future Event

Mon 5th / 8pm / £5 / £4

Premier of **Slaughter No Remedy**, a short film that studies the life of Walter Ayles a leading member of the **INDEPENDENT** Labour Party in Bristol, jailed for his refusal to fight in **WW1**.

This is followed by Watford's Quiet Heroes, a documentary telling the largely forgotten stories of WW1 war resisters.

Then The March exposes the contemporary policies that are increasing military involvement in schools across Britain. Also **Q&A** and **DISCUSSION**.

DADA FOR GIRLS presents Carved
Sat 10th/ 8pm/ £8 advance / £10 on the door

The antidote to schmalz, saccharine and sparkle – a **SURREAL** celebration of all we love to hate about the four letter word that is X**S.

Join Bristol's most daring, dastardly dames of dada as they invite you to their festive table. Get carved and partake in a Christmas dinner of absurd anarchical performance and cabaret. Special guests and interactive participation and interactive participation obligatory. A show for the **SINFUL** and undeserving.

DADA FOR

TRASHMAS: Female Trouble
Fri 9th/ 8pm/ £5

Back comb your Santa beard and strap on your cha-cha heels: it's **TRASHMAS!** Join us for an evening of **JOHN WATERS** inspired Christmas filth, featuring the notorious Female Trouble, and other sleazy seasonal delight. When Dawn Davenport doesn't get her Christmas wish, she embarks on a path to felony and depravity that ultimately leads to an electrifying climax.

Expect tawdry cocktails, **TASTELESS** DJs, and a Secret Santa exchange extravaganza!

20th Century Flicks: McCabe and Mrs Miller
Thu 15th/ 8pm/ £5/£4
Robert Altman / 1971/ USA / 120 mins/ Cert: **15**

Gambler John McCabe (Warren Beatty) arrives in a small Northwest town and sets about making it his own by opening a brothel alongside **STREETWISE** madam Constance Miller (Julie Christie). However, their profitable business partnership and nascent romance are threatened when a mining corporation violently sets its sights on the town.

An unorthodox, hauntingly beautiful revisionist Western with striking use of **LEONARD COHEN** on its soundtrack.



Fuck off 2016. now YOU can die.

Whether this is just **OUR** sentiment, or our **PARTY'S** name, is yet to be confirmed.

Sat 31st / 8pm til late / Keep your wit about you and others

Your Name (Kimi no Na wa)

SUN 4th, 8pm
 SUN 11th, 5:30pm
 (TTT/ Babycinema) // £5 / £4

MAKOTO SHINKAI
 2016 Japan / 107 mins
 | Japanese with English subtitles | Cert: **12A**

Mitsuha and Taki are two **TOTAL** strangers living completely different lives. But when Mitsuha makes a wish to leave her mountain town for the bustling city of Tokyo, they become connected in a bizarre way. She dreams she is



a boy living in Tokyo while Taki dreams he is a girl



from a rural town he's never been to.

PRECISE

Considered by many as the heir to Miyazaki, Makoto Shinkai proves himself to be a master of precise, beautifully observed animation.



Nocturnal Animals

TUE 6th - THU 8th, 8pm // WED 7th, 11am (Babycinema) // £5 / £4 / £3

(TTT/ Babycinema)
TOM FORD | 2016 / USA | 117 mins | Cert: **15**

Denis Villeneuve (*Prisoners*, *Enemy*, *Sicario*) directs *Arrival* as a sci-fi drama about the panic that follows a wave of mysterious spacecraft landings across the globe.

CHALLENGES

At once beautiful and haunting, *Arrival* challenges the notion that technology improves our ability to communicate by focusing on the fundamentals, it is an **ALIEN** movie that is fundamentally humane.

Tom Ford's second feature is a haunting romantic **THRILLER** of shocking intimacy and gripping tension that explores the thin lines between love and cruelty, revenge and redemption.

Amy Adams and Jake Gyllenhaal star as a divorced couple discovering dark truths about each other and themselves in "Nocturnal Animals."

SIGNALS

A brilliantly assembled, unsettling work that signals a major step forward for the fashion designer / film director.

Arrival

SUN 11th - WED 14th, 8pm // WED 14th, 11am (Babycinema) // £5 / £4 / £3

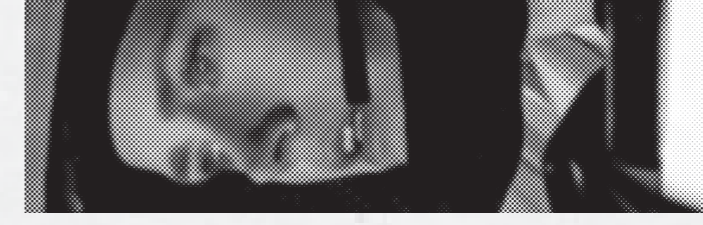
(TTT/ Babycinema)
DENIS VILLENEUVE | 2016 | USA | 116 mins | Cert: **12A**

Jim Jarmusch's latest follows the quiet, subdued existence of a driver in the city of Paterson, New Jersey across a week of **DOG** walking, **BUS** driving, and writing reflective poetry in his journal.

MASTERPIECE

Despite receiving encouragement from his loving wife (Golshifteh Farahani), Paterson refuses to share his burning talent with the world.

An American paean to the gentle delights, interiority and capacity of reflection afforded by small-town life.



Paterson

SUN 18th - TUE 20th, 8pm // WED 21st, 11am (Babycinema) // £5 / £4 / £3

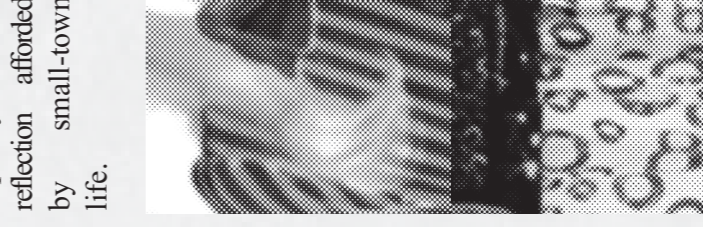
(TTT/ Babycinema)
JIM JARMUSCH
 2016 | USA | 113 mins | Cert: **TBA**

Denis Villeneuve (*Prisoners*, *Enemy*, *Sicario*) directs *Arrival* as a sci-fi drama about the panic that follows a wave of mysterious spacecraft landings across the globe.

CHALLENGES

At once beautiful and haunting, *Arrival* challenges the notion that technology improves our ability to communicate by focusing on the fundamentals, it is an **ALIEN** movie that is fundamentally humane.

Tom Ford's second feature is a haunting romantic **THRILLER** of shocking intimacy and gripping tension that explores the thin lines between love and cruelty, revenge and redemption.



Meet Me In St. Louis

WED 21st 8pm
 THU 22nd 8pm
 £5 / £4

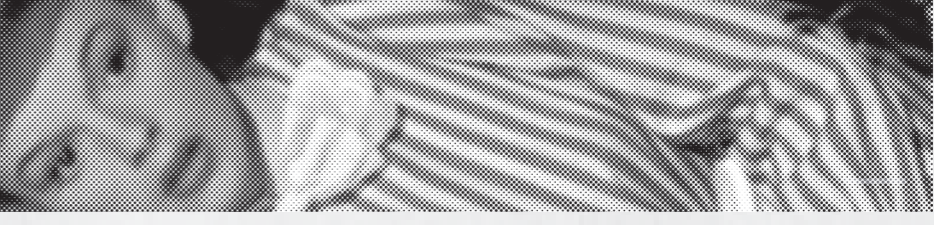
VINCENTE MINNELLI
 1944 | USA | 113 mins | Cert: **U**

Jim Jarmusch's latest follows the quiet, subdued existence of a driver in the city of Paterson, New Jersey across a week of **DOG** walking, **BUS** driving, and writing reflective poetry in his journal.

MASTERPIECE

Despite receiving encouragement from his loving wife (Golshifteh Farahani), Paterson refuses to share his burning talent with the world.

An American paean to the gentle delights, interiority and capacity of reflection afforded by small-town life.



The CABARET of Curiosities

SAT 17th | 8pm | £10 adv

A stylish, vintage vaudevillean Cabaret in this stylish intimate **RED-VELVET** vintage auditorium. Vintage. Stylish. The Cabaret of Curiosities has been playing to packed houses since March 2007 and is hosted and produced by Zuleika Ziegfeld and Richie Paradise and supported by a **TEAM** of volunteers at The Cube, Bristol.



Make this...Cube Cabaret...Annual event yours!

The Cube Christmas Market
11am - 4PM / Sun 4 December // 11:00
Tickets: FREE entry / Tables £5

We start our festive celebrations with the annual Christmas market. Join us for a bit of hygge, **MULLED** wine, Scandinavian treats and beautiful **HOME** made things. True to tradition, Nanoplex will join us with a timely screening of Charlie Brown's Christmas Special at 4pm. There will be the occasional DJ in the bar to get you in that early Xmas shopping mood.

"What a good way to spend a Sunday away from the high street!"

want a table? contact kari@cubecinema.com



FREEEntry4ALL: ACharlieBrownChristmas
Sun 4 December // 16:00

Join us for an education in the true meaning of Christmas.